

CONTACT

August
1971

Who will be
"The Girl from MANWEB - 1972"?

(See page 158)

The Girl from
Manweb



The "Girl from MANWEB"—1972

LIVERPOOL Corporation and Mecca Ltd. may argue over who is the real Miss Liverpool . . . there may be battles over who is to represent England in the Miss World contest . . . but as far as we are concerned, there is only one "Girl from MANWEB."

As readers of this magazine will already know, our girl this year is **Miss Hilary Panting** who works as a bonus clerk supervisor with the Work Study Section at Birkenhead.

Now we are setting the wheels in motion to start the search for next year's "Girl from MANWEB."

On our travels to the various offices and depots scattered around the Board's area, we have spotted many pretty and charming young ladies who would certainly qualify for the new title. But we cannot sponsor them all, for each entrant in "The Girl from MANWEB" competition needs her own personal sponsor.

Entry is free—all you need is an entry form obtainable from *The Editor*, "Contact," MANWEB, Head Office, Sealand Road, Chester CH1 4LR (internal telephones 2164/2166/2167). Photographs will not be required at this stage.

Districts and Departments may have as many entrants as they wish.

Preliminary judging will be arranged to bring forward one girl from each of the three Groups and three girls from Head Office staff. *These numbers are based on proportional representation.*

The six finalists will then be invited to Head Office in December when "The Girl from MANWEB—1972" will be chosen.

The judges throughout the competition will be looking for girls with charm, personality, beauty, dress sense, clear speech and deportment. The entrant must of course work for MANWEB, she may be married or single, but **must be over 18 years of age.**

The girl chosen as the winner will receive a prize of £50. The runner-up will receive £25 and for the girl in third place there will be £15. Each of the losing finalists will receive £10. Even the sponsor of the winning girl will get £5 so there are some excellent prizes to be won.

Most important—please make a note—the closing date for entries is November 12th, 1971.

So don't delay—send for your entry forms now!

CHARTER FLIGHT TO CANADA

The MANWEB (Chester) Sports and Social Club are hoping to arrange a charter flight to TORONTO in August 1972.

The cost of the trip will be about £60. If you are interested please get in touch with

Mr. J. G. Roberts,
Welfare Section, Head Office.

Telephone:

External Chester 40133 Ext. 219
Internal 2146.

APPLIANCE SALES BOOM

During the second half of 1970/71, sales of domestic electrical appliances from MANWEB shops were 16% up over the figures for the comparable period in the previous year. Leading the boom were clothes dryers, washing machines, refrigerators and cookers.

During the six months more than 15,500 storage radiators were sold (a slight drop on the previous year), but Electricaire and floorwarming installations showed substantial increases—a measure of electricity's continued progress in the central heating market.

The generally unsettled economic and industrial conditions were reflected in only very modest increases in electricity sales (1.7%), with industrial sales increasing by only 0.7%. Home and farm sales rose by 2.5%, while commercial and other sales went up by 3.1%.

These figures are contained in the Board's half-yearly information statement to the Consultative Council.



THE STAFF MAGAZINE OF THE MERSEYSIDE
AND NORTH WALES ELECTRICITY BOARD

CONTACT

Vol. 23 No. 8

August 1971

On other pages

Questions in the House	160
Liverpool Show	161
Shop of the Month – Wrexham	164
Talking Notes	166
Super Showhouse	168
Pension and Superannuation	170
Retirements	172
E.E.I.B.A. Appeal	176

Editorial Staff

Keith Baldwin
John F. Perry
Sam Doughty

EDITORIAL

Behind the Stands . . .

THE VAST crowds of people—probably running into millions—who, each summer, pay a visit to the scores of agricultural and flower shows and carnivals which are held up and down the country, probably have little idea of the vast amount of work and planning which goes into their presentation.

The shows range from vast exhibitions covering many acres, with entertainments ranging from the ever-popular show ring to army sky-diving displays, down to the most modest kind of village flower show held in one tent on the vicarage lawn.

To help balance the budget, and to give local tradespeople a chance to extol the merits of the goods and services they offer, the show organisers allocate a proportion of space to trade exhibits, and these stands can usually be relied upon to display all that is most up-to-date in their own particular line.

It has long been the custom for MANWEB to participate in events of this kind staged within the Board's distribution area, but participation involves much more than hiring a tent and installing some domestic appliances.

The presentation of the Board's services on a show stand involves our commercial staff in a considerable amount of long-term prior planning, with a hundred and one matters of detail to be carefully arranged, sometimes many months before the brief period of the show itself. After the crowds have died away, if the event has come up to expectations, there are many business leads to follow up.

In this number of *Contact* a colleague who is each year up to his neck in planning the MANWEB exhibit at Liverpool Show gives us a fascinating insight into the behind-the-scenes turmoil.

So next time you see the MANWEB emblem on a show stand, spare a thought for your colleagues who have burned the midnight oil and worn their nerves to tatters to see that it got there!

QUESTIONS IN THE HOUSE

Landlords (Overcharging of Tenants)

Mr. Meacher asked the Secretary of State for Trade and Industry if he will introduce legislation to make it a criminal offence for a private landlord wilfully to overcharge a tenant for the use of gas or electricity.

Mr. Ridley : This is a possibility I am considering.

Electricity Supplies (Deposits)

Mr. Alfred Morris asked the Secretary of State for Trade and Industry how many tenants in the areas of the electricity boards have been required to pay deposits as a security against non-payment of accounts.

Sir J. Eden : I am asking the Chairman of the Electricity Council to write to the hon. Member.

Mr. Alfred Morris asked the Secretary of State for Trade and Industry what general directions he has given to the electricity boards requiring them to refrain from demanding payments from new tenants in any accommodation as security against non-payment of accounts.

Sir J. Eden : None. The boards have specifically been given statutory powers to require a security, but any tenant concerned about the manner in which they are implemented is free to raise it with the appropriate consultative council.

Refrigerators (Disposal)

Mr. Milne asked the Secretary of State for the Home Department if he will now introduce legislation in regard to the sale of refrigerators so that retail establishments can be responsible for the removal and disposal of a model no longer needed by the purchaser ; and if he will make a statement.

Mr. Sharples : My right hon. Friend sees no justification for imposing such an obligation on retailers. A householder need only ask his local council if he wishes to dispose of an old refrigerator.

Electricity Boards (Ancillary Activities)

Mr. David Stoddart asked the Secretary of State for Trade and Industry what is his estimate of the amount of revenue lost by electricity boards on the basis that the ownership and control of showrooms, contracting and similar other activities in the electrical utilisation field were removed from them and of the effect of this on the price of electricity.

Mr. Ridley : The net revenue after all charges as recorded in the accounts for 1969-70 was £4.5 million before allowing for interest on capital employed. The turnover of the boards in the same year on all their operations was £1,460 million.

Nationalised Industries (Price Increases)

Mr. Evelyn King asked the Secretary of State for Trade and Industry if he will issue a general

direction to the gas board and other nationalised industries for which his Department is responsible, that, when prices are increased, they should in no circumstances be more than doubled.

Sir J. Eden : No. The chairmen of the nationalised industries have agreed to match the performance of the private sector members of the C.B.I. by accepting the same restraint on prices on the same conditions.

Valued-added Tax (Electricity Tariffs)

Mr. Alfred Morris asked the Chancellor of the Exchequer if he has yet decided whether his proposed value-added tax would apply to electricity ; what is the likely effect on electricity tariffs for consumers ; and if he will make a statement.

Mr. Higgins : As my right hon. Friend said in his Budget speech, the precise rates and coverage of the value-added tax are matters for decision nearer the time of its introduction. Until those decisions are taken, it is not possible to say what effect its introduction might have on any particular item.

Power Stations (Coal Consumption)

Mr. Adam Butler asked the Secretary of State for Trade and Industry what is the current annual rate of consumption of coal by Electricity Board power stations, and how this compares with the rate 12 months ago.

Mr. Ridley : Total coal consumption by power stations in the first half of 1971 was 37.8 million tons compared with 41.1 million tons in the corresponding period of last year. About one per cent. of these totals was accounted for by power stations which are not producing electricity for public supply.



COUNTDOWN FOR LIVERPOOL SHOW

A Behind the Scenes Picture

by **TOM SALADINE**

(Sales Supervisor, Liverpool District)

'The finest Three Day Show in the country' shout the posters advertising the Liverpool Show. They must be joking—for me it is a 365 day show!

It all began at last years show on Thursday, July 16th, 1970. It was 10 a.m. The crowds were starting to roll in on the first day of the show. The show surveyor visits our stand. "Good morning. Like your position do you? Good. Like to book the same site for 1971?"

A quick word with Head Office and it is provisionally agreed that we are 'in' for 1971. And so, with three days business to do on the 1970 show, we have started on the next one.

The official letter from the Show Office arrived later in the month asking for our intentions in writing. We were still analysing the results of the 1970 show, arranging deliveries and following up leads. A quick calculation reveals that we have done some £7,000 worth of business. Next year we want to do about £8,000.

Costs of staging the show are examined and in early October a meeting is held with all concerned—the marketing, display and building sections. Did we

make a profit? How much of the business would have been obtained through our shops anyway? How much business would the shops gain at a later date? Will the woodwork facias do for '71. How much extra cost? etc., etc. After long discussion it is decided to go in for one more year, at least.

In January, I made a rough design of the stand. This was knocked into shape and drawn in detail by Mr. Ron Sand, the shop design and layout supervisor at Head Office.

In February letters were sent inviting manufacturers to co-operate. Space allocated to them. Decisions taken as to which appliances we will show from our rationalised stock list, and which 'special appliances' we will agree to manufacturers showing. Orders are sent out for hire of tentage. Estimates invited for flagging the site, staff catering, floral decoration of the stand, etc.

Now it's April. Panic! The display boards have not been started. Display Section tied up with work on the float for the Lord Mayor's Show. Somehow we managed.

Back to the routine. The telephone is ordered,



The Demo Team, from left to right : Miss Barbara Strange, Mrs. Alma Burrows, Mrs. Christine Farrell, Miss Ann Semple and Miss E. V. Jones.

◀ Mr. Tom Saladine, left, uses the microphone to call visitors on to our stand, as Mr. Joe Need stands by.

... ROUND THE STAND



Above : Electrician Maurice Lock, left, and his apprentice Steve Dolan at work on the stand.
Below : From left to right : Messrs. C. L. Brown (Electrical Division of Radiation), and from North Mersey District, A. W. Hawley (District Engineer), and D. E. Noad (District Commercial Engineer).



Above : Not just a personality, but our "Girl from MANWEB" can sell our products too!
Below : Friend Rudolf peeps in the picture as a sale is about to be made.



water and electricity supply positions are sent to the show secretary. Works instructions are raised for transport, watchmen, labourers, hire of chairs, tables, amplification equipment and all building and electrical work; orders sent off for floral decoration, flagging, catering and special appliances for display.

The show construction guide is published in mid-June, followed a few days before the show opens by the Sales Staff Guide, giving details of appliances on display, staffing rota, trade-in schedules, contracting prices, special show offers, etc.

Suddenly—it can't be—but it is—it's Friday the 25th June, and work starts on the site. Wonderful! The tentage people have the tent up on time. On Tuesday, 29th June, our building section are on the site.

Wednesday, 30th June . . . snag . . . the flagging people have not turned up. Many 'phone calls and threats (like 'if you don't start immediately we won't give you the contract next year'). This has no effect as they didn't want the job in the first place, and were only doing it out of kindness—plus their fee of course.

Thursday, 31st June. Still no flagger!

Friday, 1st July. Wonderful, they've turned up. Stern voice from me "You know this flagging has to be finished by Monday?"

Equally stern voiced flagger, "Don't panic, it'll be finished." Twelve days later we are moving the appliances in and the flagging still isn't finished!

Work progresses steadily. The 'phone is in, the water is in, the sparks are on site, and come Monday, 12th July all major building work is completed. Next day all appliances are delivered and we begin the display of our section of the stand. On Wednesday some twenty manufacturers' representatives and demonstrators descend on the stand to complete the display of their products. Our demonstrators prepare their demonstrations and 'dress' the fridges, freezers, etc.

The theme of this years Liverpool Show was "The Space Age" and our sales staff on duty took the opportunity of putting our sales into 'orbit.' We completed sales of £11,000 at the show and there is still £1,000 worth of leads to be followed up, at the time of writing.

Tom Saladine, writer of this article expressed his profound thanks to all concerned with the erection and staffing of the stand. He had a special word of thanks for the sales staff and demonstrators on duty on Saturday, who virtually 'worked themselves into the ground.' "Sales for no less than £4,000 were completed in two hours on Saturday afternoon." he said.

"All manufacturers must complete their display and be off the site by 4 p.m." So said my instructions to them by letter. At 6.00 p.m., they have all gone bar one. A sort of peace reigns at last. Left on the stand now, apart from myself, are Ted Kelly (senior salesman) and George Roberts, then a salesman, now in charge of Moreton shop, and Joe Need from Display. Oh yes! there's still one rep.

We put the final touches to the stand, fix price tickets and point of sale material, etc. It's 10.00 p.m. We've finished, wonderful, so has that manufacturer's rep. We forgive him at this stage as he offers to take us to the Bar Tent for a night cap. Home in bed at 11 p.m.

Brrrrrrrr—the alarm rings out all to soon. It's back to the stand for 8.00 a.m., for a check before the opening at 9.00, and the judging of the trade stands—Blast! The Gas Board won the award.

It is Thursday, 15th July, 1971. It is 10.00 a.m. The crowds are starting to roll in on the first day of the show. The show surveyor visits our stand. "Good morning. Like your position do you? Good. Like to book the same site for 1972! . . ."

Some of our staff on their tour of duty at the Show. From left to right: Messrs. E. Kelly, G. Roberts, T. Saladine and D. Robinson, Miss E. Bailey, Messrs. T. Roddick and R. A. Schollick. We apologise for the poor print—somebody moved!



SHOP OF THE MONTH

QUEEN ST. WREXHAM



For the past 44 years, people in Wrexham and the surrounding areas have called in at the 'Electric Shop' in the town's busy shopping centre to pay their electricity accounts and select new electrical appliances.

It was back in 1927 that Wrexham Corporation Electricity Department took over the premises which up to that time had been a cobblers shop.

Today, much shoe leather is worn down by the thousands of people who come into the MANWEB shop. Last year, they spent some £150,000 plus, and the turnover per square foot of selling area was the highest of any of our shops.

The supervisor, **Mr. Richard G. Jones** was on his own when he took over in 1946. Annual sales then amounted to around £500. Gradually he built the business up to the £5,000 mark and since then it has climbed steadily.

Richard has been in the industry since 1936 when he worked for the Yale Electric Power Company at Blaenau Ffestiniog. Later he saw war service with the R.A.M.C. in many parts of the world.

On his return home, his family moved to Wrexham, so Richard applied to the Wrexham Corporation and got a job in charge of the Electricity Showrooms.

He lists photography, water-colouring and oil painting among his hobbies. He is also a keen handyman and likes doing any practical work.

His wife Moira was the first woman in Denbighshire to gain a Domestic Science Diploma.

They have a son, Bryan, who is studying economics at Dudley College.

Mr. Don K. Biggs, is a senior salesman who has been with us for the past 18 years. He started at Legacy in the telecommunications section and three years later moved to the Wrexham Shop. Don is keen on cine-photography



Shop supervisor, Dick Jones.

and when not doing this he enjoys working in his garden.

Mrs. Margaret Rose Haskey has been at Wrexham as a saleswoman for about six years. Previously she had been a demonstrator with the English Electric Company working at Flint, Mold, Johnstown and Wrexham. She enjoys cooking and even does a bit of the large scale stuff for local parties and weddings. Margaret also likes reading and singing.

Mrs. Myra Pearson started work with MANWEB in 1948 in the Revenue Department at Rhostyllen. She left in 1952 when her son was born. Two years ago Myra came back as a saleswoman at Wrexham. She is interested in fashion and likes going out at week-ends with her family. Husband Ivor works at Head Office and is an Admin. assistant in Revenue and their

A smile for a customer from Margaret Haskey.





Above: Myra Pearson checks in another account.

Below: Don Biggs returns after a trip to the bank.



son Howard is also at Sealand Road working as a Drawing Office assistant.

Mrs. Sonia Wills, a saleswoman has been with us for seven years, first at Mold shop and then at Wrexham. Previously Sonia worked as a demonstrator with the English Electric Company. She likes to dance, read good books and is very fond of singing.

Mrs. Evadne Traske, joined the staff at Wrexham shop last September as a part-time saleswoman. She once worked for the South Wales Board in Cardiff.

She enjoys amateur dramatics, working for the W.R.V.S., running a Brownie Pack and doing a spot of dressmaking.

Mrs. Ann Maddocks, a part-time saleswoman came to the Board in 1960 when she worked at the Shotton shop. After leaving to get married, Ann returned to the fold last year when she came to Wrexham on a part-time basis.

She is a keen dancer and enjoys listening to records.

Mrs. Christine Jones, has recently been in hospital and is just about getting back into the swing of things. She started work with MANWEB in 1954 in the Stores Accounts section at Willow Road. In 1961 her son was born.

In 1968, Christine re-joined the Board as a part-timer. She likes sewing and dancing.



Above: Sonia Wills busy with a customer.

Below, left: Evadne Traske busy on the telephone.

Below, right: Just to show that they can relax, Ann Maddocks and Christine Jones pose for our photographer.



Talking Notes

TABLE TENNIS CHAMPIONS

The finals of the MANWEB Head Office Annual Table Tennis Tournament were held at Sealand Road recently. There were 28 entrants for the singles competitions and 32 for the doubles—only half the number of entrants for last year's contests.

In both competitions winners of each round were redrawn to select their opponents for the next round, and in the doubles contest competitors also drew for new partners after each round. This proved to be the fairest method, especially in the doubles, in which a moderate player stood a chance of reaching the final.

Winners of the doubles competition were **Pat Byrne** from the printing and stationary office, and **George Harrison** of the legal

section. They beat Table Tennis section Secretary **Bob Blair**, from the drawing office, partnered by **Mike Edwards** from the computer section. **Reuben Perry**, from the fourth floor registry became the 1971/72 Table Tennis Champion when he beat Pat Byrne, joint winner of the doubles title, in the Singles Final.

Hotrod?

Trying to land the title of champion fisherman for the fifth successive year is **Mr. John Ashbrook** a contracting foreman based at Chester. A member of the 50 strong MANWEB Angling Club—a section of Northwich Sports and Social Club—John has proved his consistency with four

wins out of the five years the competition has been run.

Points are awarded for the twice weekly contest, Wednesday evening and Sundays. The rod that reels in the largest catch is awarded 3 points, 2 for the second and one for the third. At the end of the season the points are totted up and the winner declared.

Trickett's Pool, Sandiway is the scene of these contests, and it is the rudd, bream, roach, tench and carp that are stocked there who are the object of the fisherman's patient skills—those that get away don't count!

Mystery Solved

A **Rhyl old-age pensioner** was puzzled by the fact that her electric bill had gone up . . . while her gas bill had gone down.

Meter readers from both Boards called to check the readings . . . and then she realised the reason for the change.

In a note to Clwyd District she explained . . . "I so dislike the new gas, and had been using my immersion heater instead of the gas geyser, so my query was answered before your representative arrived . . . I'm getting on in years and didn't realise 'less gas, more electric'".

—7—8—9—Pouff!

A cat crept into one of our outdoor substations at **Mold Road, Shotton**, climbed on to a 33,000 volt conductor and brought to an end its earthbound ambitions. It also put about 5,000 of our customers in the dark for about half an hour!

Pensioners' Blackpool Trip

About 120 people, pensioner members of the **St. Helens Gas and Electric Social Club**, with their wives, enjoyed a splendid day out in Blackpool on July 15th.

Leaving St. Helens by coach in the morning, under the guidance of officers of the Club's social committee, they arrived at the seaside at lunch-

Mr. R. T. Gales, *centre left*, as Chairman of the Sports and Social Club, hands over the trophy to Singles Champion, Reuben Perry. Winners of the Doubles title Pat Byrne, *on the left* and George Harrison, *on the right*.





The Mayor of Birkenhead, Alderman K. Porter, is seen here with Councillors and Corporation Officials on the occasion of their recent visit to our Head Office, as guests of our senior Commercial staff.

FOR SALE

● Tropical fishtank 37" x 12" x 12", complete with hood, lighting, filters, thermometers, air-pump. Cost £37 a year ago. Accept £10 o.n.o. Mr. J. E. Robbins, Wayleaves Section, 451, Head Office.

● MGB 1966 British Racing Green—Radio—Tonneau—Good Con-

dition £595. Mr. C. E. Donovan, System Management, 4W1, Head Office.

● Semi-detached bungalow at Penny-Cae, near Wrexham. Two bedrooms. Bathroom. Open views. Excellent decorative order. £2,300.

Mr. R. Pendleton, Work Study Section, Lister Drive, Liverpool.

time, and after a couple of hours spent at leisure enjoyed a slap-up meal at a well-known Blackpool restaurant.

Soon afterwards they went to the Winter Gardens Opera House to make the most of a good laugh at the Ken Dodd show, and after the show returned home in time for those who felt inclined to spend another hour at their Club in St. Helens.

Despite cool and blustery weather, everyone thoroughly enjoyed the outing, and thanks are due to those who put in the spadework to organise the trip.

Just a few of the St. Helens pensioners group taken before they boarded the coaches for Blackpool.

Showtime

Home Improvements was the well-displayed theme on the MANWEB stand at this year's St. Helens Show. The Mayor and Mayoress of the Town, were joined by a number of Councillors and Officials in visiting the Board's exhibit. Their escort was Mr. Ken Appleton (Energy Sales Engineer, South Lancs.).

Our "Girl from MANWEB," Miss Hilary Panting, was also present to hostess the civic party and act as one of the judges in the competition to find the "Showqueen."



At the Show, the Mayor and Mayoress of St. Helens, Councillor and Mrs. C. Martin, with our "Girl from MANWEB" and Ken Appleton.



Super Showhouse pulls in the Visitors

Number four, Lunar Drive, is the address of a brand-new three-bedroomed house on a "Wimpey" estate at Netherton, Bootle, Lancs,—and the interior of the house is as modern, if not quite as complex, as an Apollo rocket!

For this is a house on a new development which has been completely fitted out by MANWEB as an Electric Showhouse, to demonstrate to specially-invited visitors the hundred-and-one ways in which domestic electrical appliances and applications can contribute to comfort and convenience in the homes of the seventies.

The showhouse, in the £4,500 price range, was chosen as the type most likely to be within the reach of most young married couples and first-time home-buyers, so as to appeal to the widest possible sector of the house-hunting public. It is basically a three-bedroomed end-of-terrace home, with a conventionally-furnished lounge-dining room, furnished and fitted to illustrate the value of good heating and lighting. Heating is by Electricaire—suitable for White Meter operation—and designed to provide full comfort warmth throughout the house.

One of the bedrooms is set out as most people would expect a bedroom to be, but in order to



squeeze a quart into a pint pot, our North Mersey District staff have put the other two bedrooms to more striking and effective use.

The house contains two planned kitchens, the normal kitchen being modestly equipped, while the largest bedroom is set out as a super-luxury kitchen containing £1,000-worth of equipment.

The third bedroom consists of an exhibition of electrical appliances, equipment and controls,



For display purposes, this super-luxury kitchen containing over £1,000-worth of equipment was laid out in the largest bedroom of the showhouse. This ideal kitchen besides making the housewife's life very much easier, puts a very high value on the house.

Civic visitors to the Electric Showhouse at Netherton meet with senior Commercial staff from North Mersey District. From left to right: Mr. D. St. C. Barrie (Energy Sales Engineer), Mr. J. P. McElroy (Booth's Planning Officer), Mr. D. E. Noad (District Commercial Engineer), Alderman Fred Morris (The Mayor of Bootle) and Mr. W. A. Hallatt (Deputy Borough Treasurer).



designed—in the words of District Commercial Engineer, Mr. D. E. Noad—“to go a little further than the conventional electric showhouse and to try to stimulate interest in a wider range of electrical apparatus.”

The exhibition embraces examples of storage heating systems, air-conditioning, gardening equipment, switches and accessories, and White Meter control equipment.

Hot water for the showhouse is provided by a 40 gallon storage unit, insulated with high-density mineral wool.

Among groups which have visited the house are representatives of local authorities, councillors,

architects, property developers, consultants, builders, domestic science teachers, women's organisations, and groups of sixth-formers.

The house fills a valuable secondary use in acting as the venue for staff meetings and training courses.

Co-ordinating the planning and presentation of the project, was Mr. Noad, assisted and advised by the District's commercial organisation.

Scores of manufacturers of every kind of domestic electrical appliance and fitting have co-operated in the provision of the exhibits, and the showhouse has attracted a great deal of attention from everyone concerned in the planning and building of new homes throughout Merseyside and South West Lancashire.

An unusual feature in the Electric Showhouse was this 'display stand' erected in the third bedroom exhibiting electrical appliances, equipment and controls. This exhibit was designed to stimulate the visitors interest in the wider range of electrical apparatus.



PENSIONS & SUPERANNUATION

Increase in Pensions

The Electricity Council have agreed a proposal that Boards should give increases corresponding to those proposed by the Government under the Pensions (Increase) Bill, 1971 to all pensioners receiving pensions on the 1st April, 1971. Like the Government, these increases will be payable with effect from the 1st September, 1971. For Staff Scheme pensioners the increases will, of course, take into account the 2½% built-in increases already provided under the Staff Scheme. The arrangements to give effect to this decision are being put in hand immediately and it is hoped that pensioners will receive the increases by the end of the year.

Amendments to the Superannuation Scheme

A number of amendments have been made by the Electricity Council and approved by the Inland Revenue. The amendments give effect to various recommendations of the Management Committee and enable the Scheme to be approved for tax purposes under the Finance Act 1970.

The main amendments which affect members are :

☆ Pensionable salary will be based on a member's final year's pay and will operate for all retirements after the 3rd October 1969.

☆ The qualifying period for benefits has been reduced from 10 to 5 years contributing service. This amendment also permits employees to become members of the Scheme if they are able to complete five years contributing service by normal retiring age.

☆ A guarantee of five years pension for those who die within five years of retirement will in future include the 2½ per cent built-in increases, if any, payable at the date of death.

☆ The built-in pensions increases of 2½ per cent per annum will apply to frozen pensions and lump sums. Frozen benefits, in future, will include widow's pensions at the half-rate for those who have paid the additional family contributions.

☆ The Council will no longer have discretion to grant a lump sum payment in addition to a refund of contributions on resignation, except, in respect of members who have already completed the 10 years qualifying period by the 6th April, 1971. This discretion has only been exercised in the past in exceptional cases of hardship.

The broad effect of this decision is that the pensions of all those affected will be restored to their original purchasing power. This will be achieved by—

- (i) *Adjusting pre-1969 pensions to the 1st April, 1969, level. Generally speaking, pensions which commenced before 1960 had already recovered more than their original purchasing power at the 1st April, 1969, whilst those which commenced after 1960 will require increases of up to about 14% to bring them up to the 1969 standard, and then*
- (ii) *Uplifting the adjusted pension as in (i) or current pension (less the 2½% built-in increases for Staff Scheme pensioners) whichever is the greater, by a further 18% to cover the increase in the cost of living during the two years to 31st March, 1971 and to compensate for the five months gap to the date of payment on the 1st September, 1971.*
- (iii) *Uplifting basic pensions which commenced during the period from 1st January, 1969 to the 1st April, 1971, by the following percentage increases—*

date pension commenced

<i>1st January to 1st April 1969</i>	<i>.. ..</i>	<i>18%</i>
<i>2nd April to 1st October 1969</i>	<i>.. ..</i>	<i>16%</i>
<i>2nd October 1969 to 1st April 1970</i>	<i>.. ..</i>	<i>14%</i>
<i>2nd April to 1st October 1970</i>	<i>.. ..</i>	<i>10%</i>
<i>2nd October 1970 to 1st April 1971</i>	<i>.. ..</i>	<i>6%</i>

It has not been possible in the time available for the Council to consider the general question of pensions in relation to continuing inflation, and the Council are now reviewing the whole issue. The decision to pay increases from the 1st September, 1971 has been taken as an immediate step to deal with existing pensioners whose pensions have already been seriously eroded by inflation.

Obituary

It is with deep regret that we record the death of Mr. Robert Glyn Morris, aged 39 years. Glyn, who was the supervisor at our Barmouth shop, had been seriously ill for some time but the news of his death was received with sadness among his friends in MANWEB.

Glyn was from a seafaring family and he kept up their 200-year-old association with the Lifeboat Service when he became a member of the crew at Barmouth.

Our deepest sympathy goes out to his wife Myra, and their two children Steven and Beverly.

SUPPLEMENTARY PENSION SCHEME

A supplementary pension scheme providing additional benefits to ex-company and other vested employees who are members of the Electricity Supply (Staff) Superannuation Scheme has been established by the Electricity Council. The supplementary scheme, which has been approved by the Inland Revenue, will operate from 1st June, 1971.

The decision follows a request by the staff union that further consideration be given to the question of the back service credits granted to ex-company and other vested employees when they joined the Staff Superannuation Scheme.

The unions' proposal that pre-vesting electricity service which has not been covered by the back service credit should be reckoned on a parity with the non-contributing service of local authority employees, has been accepted by the Council and Electricity Boards, on the clear understanding that it represents a full and final settlement of the problem.

The additional benefits will be calculated and paid by the Board out of their revenue—

- (i) for existing employees on the appointed date ;
■ ■ as at the date of retirement or earlier death,
and
- (ii) for pensioners ; as at the 1st June, 1971, with
no arrears or additional lump sums to be paid.

These additional benefits are in substitution for any existing rights established by virtue of the past practices of the former electricity undertakings and other ex-gratia payments except where those existing rights are more favourable when the higher amount will continue to be payable.

The supplementary scheme will not apply to employees with service with local authorities or other bodies with equivalent pension rights if that service has been reckonable on transfer to the Staff Scheme, or to employees who remain subject to their pre-vesting scheme or rights.

Although the operative date for the supplementary scheme is 1st June, the proposals will entail Boards in a considerable amount of work and it may be some time before they are in a position to implement them for pensioners.

PHOTOGRAPHIC COMPETITION 1971

Entry is free, but restricted to MANWEB employees, pensioners and their families.

Each entry must be the original work and copyright property of the person submitting it.

The Editor reserves the right to reproduce the winning pictures without a fee being paid.

Pictures must have been taken since August 1st, 1970.

Any number of Black and White prints may be submitted, but only FIVE colour prints or transparencies in any one section from each competitor.

Enclose a note with your entries stating your name and address (office or if pensioner, home), the title of each picture and the class entered.

Prizes—**Colour** : 1st prize—£10 ; 2nd prize—£5 ; 3rd prize—£3.
Black and White : Portrait £5 ; General £5. **Best Humorous picture** (colour or black and white) £2.

Entries to *The Editor*, 'Contact,' MANWEB Head Office, Sealand Road, Chester CH1 4LR.

Closing Date—1st October 1971.

JULY CROSSWORD PRIZEWINNERS

Here we had another fairly tough puzzle for you to solve and we are very pleased that so many of you sent in entries.

But, there could only be three winners, and the £2 prizes have been won by . . .

Miss Joanna Udall, daughter of Mr. B. G. Udall of Head Office Engineering Department.

Miss V. Henderson, formerly of the Revenue Section at Derby House, and now retired.

Mr. H. C. Trent, Stores Accounts Section at Head Office.

The solution to the crossword is as follows :

Across : 1 Relish. 4 Fielding. 10 Doubled. 11 Proudie. 12 Leguminous. 13 Elan. 15 Miranda. 17 Express. 19 Ten. 20 Noblest. 22 Tenable. 24 Tuna. 25 Discharged. 28 Bustard. 29 Indiana. 30 Landmark. 31 Adhere.

Down : 1 Reddleman. 2 Lounger. 3 Salamander. 5 Imprudent. 6 Look. 7 Indulge. 8 Green. 9 Odin. 14 Open-handed. 16 Attainder. 18 Shelldrake. 21 Benison. 23 Baggage. 24 and 26 Tubal Cain. 27 Farm.

RETIREMENTS

from Head Office

Mr. N. E. B. JONES

After 43 years in the electricity industry, Mr. Norman Jones retired recently from his position as MANWEB Commercial Purchasing Officer.

He started his career with Birkenhead Corporation as an order clerk, and joined MANWEB on nationalisation in 1948. After several years in the Area 3 Office at Chester, then in the Purchasing Department at Head Office in Liverpool, he joined the Commercial Department. It had been decided to gradually cen-

tralise the commercial purchasing and Norman Jones was appointed to implement this policy, and at the time of his retirement he controlled the buying and the distribution of all contracting and installation materials plus all domestic appliances.

Apart from his work, Norman Jones was well known for his activities on behalf of the Electrical and Electronic Industries Benevolent Association, as a member of their social executive committee.

On behalf of his friends and



[MANWEB Chairman Denis Dodds, left, presents a farewell gift to Mr. Jones.

colleagues, MANWEB Chairman Mr. Denis Dodds, presented Mr. Jones with a clock and an electric lawn-edge trimmer.

. . . Chester

Mr. A. M. V. O'CONNOR

"A man of much geniality and good humour who served the public with courtesy and efficiency," was just one of the many tributes paid to Mr. A. M. V. (Tony) O'Connor when he retired recently from his job as Control Room operator at Crane Bank.

And he had served the public for a very long time—for he started on his apprenticeship 50 years ago. After a period with a local electrical engineers, Mr. O'Connor joined the Chester Corporation Electricity Department in 1930, working in the contracting section at that time in Northgate Row.

He was among the first members of the Auxiliary Fire Service in the late 30's and when the war came,

he was fully trained and helped in the expansion of the service. As a part-time section officer, his qualities of leadership were often put to the test especially during the heavy air attacks on Bootle when he volunteered for duty on the docks.

During this very hectic period, he still put in a full day's work at his regular job and when the war ended in 1945 he transferred to the Control Room at Crane Bank as a shift engineer.

Now in retirement, Mr. O'Connor hopes to spend much more time fishing at Lake Vyrnwy and in the Dee at Corwen. All his colleagues wish him many happy hours and many good catches.

A happy group at Crane Bank Control Room, Chester, gather to say their farewells to Mr. O'Connor, centre left, as Mr. E. T Peters (District Engineer) makes the presentation.





Men from our Legacy Depot at the ceremony organised to mark the retirement of Mr. Parrott, seen in the centre of the group, marked with an x.

... Wrexham and Legacy ...

Mr. J. WILLIAMS

After a lifetime in the electrical contracting and supply field, Mr. Jack Williams, consumers' engineer in the Dee Valley District, retired a few weeks ago.

Jack received his early training in the electrical department of an Acrefair firm, and in 1934 he joined the North Wales Power Co. as installation inspector. Later he became consumers' engineer with MANWEB, in charge of the Rhos sub-District.

Jack tells us that he is only retiring from MANWEB and now takes up the job of carrying out all the work his wife has 'programmed' for him.

At a gathering of his colleagues, Mr. J. A. Winchester (*District Commercial Engineer, Dee Valley*) thanked Mr. Williams for his loyal service over 37 years, and presented him with an electrical coal effect fire as a gift from the staff.

Mr. W. PARROTT

A very popular member of our Legacy staff, Mr. Walter Parrott (*2nd assistant engineer*) retired recently after completing 35 years' service in the electricity supply industry.

He worked through his apprenticeship in various garages in the Wrexham area before joining the North Wales Power Company in 1936 as a fitter in their transport section.

During the war years he served for a time in the Home Guard and later with the Royal Air Force.

A native of Johnstown, Walter and his wife have just moved into a new bungalow in nearby Ruabon. His colleagues at Legacy garage must have had this in mind when they presented him with parting gifts of a rotary mower and other garden tools. He was also presented with a gold watch to help him keep track of the hours spent in his new garden.

Up to his retirement, Walter's main hobby was his work, but now, in addition to gardening he intends to devote a little time to painting.

Mr. Williams, second from right, with some of his colleagues in the Dee Valley District.



RETIREMENTS

from Head Office

Mr. N. E. B. JONES

After 43 years in the electricity industry, Mr. Norman Jones retired recently from his position as MANWEB Commercial Purchasing Officer.

He started his career with Birkenhead Corporation as an order clerk, and joined MANWEB on nationalisation in 1948. After several years in the Area 3 Office at Chester, then in the Purchasing Department at Head Office in Liverpool, he joined the Commercial Department. It had been decided to gradually cen-

tralise the commercial purchasing and Norman Jones was appointed to implement this policy, and at the time of his retirement he controlled the buying and the distribution of all contracting and installation materials plus all domestic appliances.

Apart from his work, Norman Jones was well known for his activities on behalf of the Electrical and Electronic Industries Benevolent Association, as a member of their social executive committee.

On behalf of his friends and



[MANWEB Chairman Denis Dodds, left, presents a farewell gift to Mr. Jones.

colleagues, MANWEB Chairman Mr. Denis Dodds, presented Mr. Jones with a clock and an electric lawn-edge trimmer.

. . . Chester

Mr. A. M. V. O'CONNOR

"A man of much geniality and good humour who served the public with courtesy and efficiency," was just one of the many tributes paid to Mr. A. M. V. (Tony) O'Connor when he retired recently from his job as Control Room operator at Crane Bank.

And he had served the public for a very long time—for he started on his apprenticeship 50 years ago. After a period with a local electrical engineers, Mr. O'Connor joined the Chester Corporation Electricity Department in 1930, working in the contracting section at that time in Northgate Row.

He was among the first members of the Auxiliary Fire Service in the late 30's and when the war came,

he was fully trained and helped in the expansion of the service. As a part-time section officer, his qualities of leadership were often put to the test especially during the heavy air attacks on Bootle when he volunteered for duty on the docks.

During this very hectic period, he still put in a full day's work at his regular job and when the war ended in 1945 he transferred to the Control Room at Crane Bank as a shift engineer.

Now in retirement, Mr. O'Connor hopes to spend much more time fishing at Lake Vyrnwy and in the Dee at Corwen. All his colleagues wish him many happy hours and many good catches.

A happy group at Crane Bank Control Room, Chester, gather to say their farewells to Mr. O'Connor, centre left, as Mr. E. T Peters (District Engineer) makes the presentation.





Mr. Johnson, centre right, with some of his friends at Marsh Lane after their farewell gifts had been presented to him by Mr. D. E. Noad (District Commercial Engineer), centre left.

*... Caernarvon and
North Mersey ...*

Mr. J. T. JONES

An assistant consumers' engineer based at Caernarvon, Mr. John T. Jones, retired a few weeks ago after 44 years' service in the electricity supply industry.

He began his career in 1927 with the National Electricity Construction Company transferring to the Caernarvon Corporation Electricity Department three years later. When MANWEB took over in 1948, John was employed as a senior sales assistant.

He is married and has two sons, and in addition to his job with the Board, John is also a special constable and is a deacon at Beulah Chapel in Caernarvon.

At a farewell gathering, he was presented with a barometer and a Parker pen set.

A parting gift being handed over to Mr. Jones, centre left, by Mr. N. Maden (District Commercial Engineer) as colleagues from Gwynedd District look on.



Mr. J. I. JOHNSON

After 38 years' service with the electricity supply industry, Mr. Jack I. Johnson has now retired from his job as consumers' engineer in our North Mersey District.

Back in 1933, Jack joined the staff of the Liverpool Corporation Electricity Department and worked on the electrical installation in the first Mersey Tunnel.

During the war years he assisted on the Lord Mayor's Emergency Committee which was set up to help people in distress. It was Jack's job to get hold of various items of electrical equipment—cookers, wash boilers, etc.—and put them where they were most needed and could be used to meet the needs of the people at any given moment.

For twenty years, he was the technical representative on the Electrical Power Engineers Association, and served on MANWEB Local Advisory Committees.

Happily married, Jack lists his hobbies—to which he will now be devoting much more time—as photography, motoring and swimming.

... and from
Rhostyllen

Mr. J. NAYLOR

A man of many parts, well-known and well-liked among his colleagues at Rhostyllen, Mr. John (Jack) Naylor recently retired after some 40 years' service in the electricity supply industry.

On leaving school, Jack worked in the offices of a coal company before going electric and moving over to the E.D.N.W. in 1930. He was with this company for three weeks before being transferred to the staff of the North Wales Power Company at Gresford where he worked in the accounts office.

In 1932 he moved to Rhostyllen where he gradually worked his way up the ladder to become Revenue Superintendent when the industry was nationalised in 1948.

He was a founder member of the former N.W.P. Sports and Social Club and served on the



Jack and Gladys at home.

Committee for a number of years. He was instrumental in forming the Trydan Friendly Society, an organisation building funds to help the local hospital. He was also a founder member and served on the early committees of the N.W.P. Branch of Nalگو when it was formed in 1947.

Jack was due to retire last February and his friends at Rhostyllen had arranged for a great send-off with a dinner at Llangollen. Unfortunately Jack became ill and had a fairly long

spell in hospital. After a period of convalescence, he returned to the office to receive a beautiful gift of a combined bookcase and cocktail cabinet from his many friends.

Now he is gradually building up his strength again and spending a little time each day in his neat and nicely laid out garden. He is also beginning a new interest as he searches out items of local history and does a bit of geology study on the side.

When our reporter visited Jack and his wife Gladys at their home, he was asked to make a special mention in his write-up of their gratitude for the goodness of their many friends. During his many weeks in hospital, Messrs. Harry Hegarty, John Myers and Keith Griffiths together with many other members of the Rhostyllen staff made regular visits and helped out in many other ways.

We now join with all their friends in wishing Jack and Gladys many years of good health and happy retirement.

FRIENDS IN RETIREMENT

These notes, jotted at random, are about how just a few MANWEB personalities, well-known to a wide circle of 'Contact' readers, are getting on in retirement.

Jim Hawes, our former stationery buyer, and one of our few printing experts, was known to and admired by everyone at Head Office and many in all Area and most District offices. Ill health led to his slightly premature retirement last year. He is still handicapped in mobility but in great spirits. He and Mrs. Hawes would welcome visits by his former colleagues.

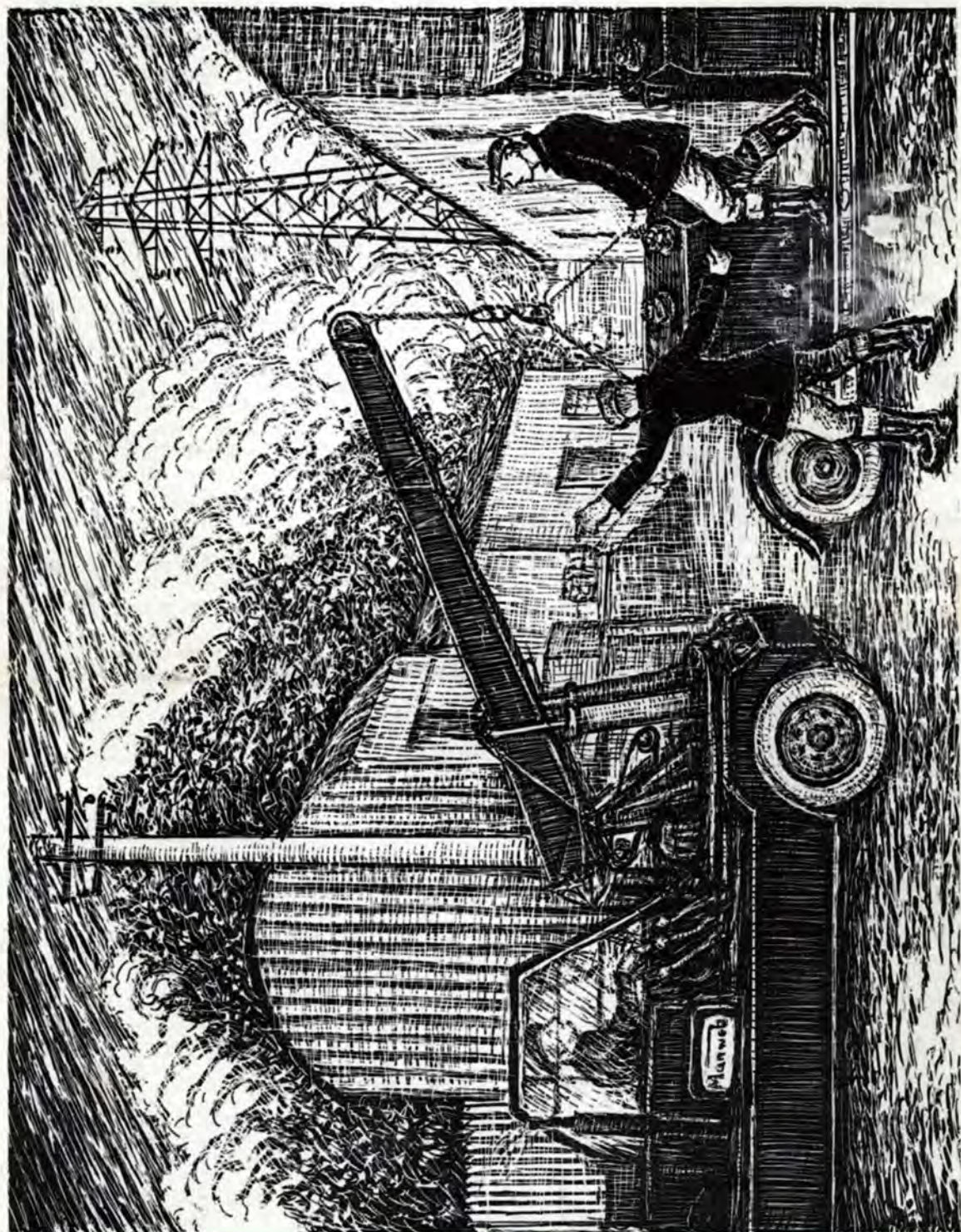
A lot of us remember **S. F. (Stan) Roberts** and his NALGO work in Area 1—and **Tom Pool**, also ex Area 1, and his work in training MANWEB's First Aid teams, whose fine record of Area and national successes has brought great credit to all concerned. I have met them both recently and they look as if they might be retiring in a few years instead of being seasoned pensioners already. Tom, incidentally, is still doing First Aid coaching for MANWEB.

Hundreds of 'Contact' readers remember **T. R. (Reg) Smith**. He retired three years ago after never a dull moment in well over forty years in the Industry. He has changed the relative emphasis of his many activities but hasn't noticeably reduced them in total. At his retirement presentation he said his neglected golf handicap would now take precedence over everything. In fact he is still up to his neck in a great variety of useful activities—but has incidentally improved his golf in what little spare time he allows himself.

Another well-known personality—**R. M. (Ron) Gravett**, has, I have noticed in the local press, added to his retirement interests the chairmanship of the recently formed Hoylelake Probus Club for retired professional and business men. I can picture a number of members' wives' lives being made easier by going all electric.

All the people I have mentioned, and others whom I hope to mention in future notes, send their very best wishes to their former colleagues.

W. W. H.



Loading a transformer at Legacy.
Scrapboard drawing by Mr. S. Jones (Legacy Stores).